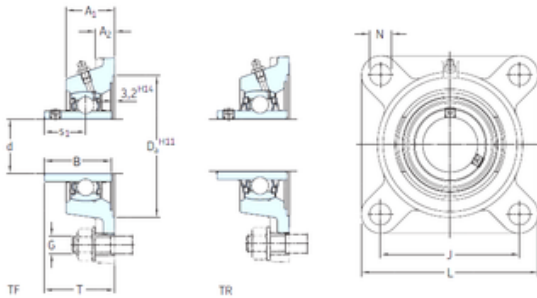


skf FY 7/8 TF Ball bearing square flanged units



Bearing No. FY 7/8 TF

Bore Diameter	22,225 mm
Width	34,1 mm
d	22,225 mm
s1	19,8 mm
A1	30 mm
B	34,1 mm
G	10 mm
J	70 mm
L	95 mm
T	38,8 mm
A2	12 mm
Weight	0,8 Kg
Basic dynamic load rating (C)	14 kN
Basic static load rating (C0)	7,8 kN
Fatigue load limit (Pu)	0,335
Category	Flange Block Bearings
Inventory	0.0
Manufacturer Name	SKF
Minimum Buy Quantity	N/A
Weight / Kilogram	0.858
Product Group	M06110
Number of Mounting Holes	4
Mounting Method	Set Screw
Housing Style	4 Bolt Square Flange Block
Rolling Element	Ball Bearing
Housing Material	Cast Iron

FY 7/8 TF Bearing 2D drawings and 3D CAD models



NTN BEARING MANUFACTURING DE MEXICO,S...

Expansion / Non-expansion	Non-expansion
Mounting Bolts	7/16 Inch
Relubricatable	Yes
Insert Part Number	YAR 205-014-2F
Seals	M Seal
Housing Configuration	1 Piece Solid
Pilot Configuration	No Pilot
Inch - Metric	Inch
Long Description	4 Bolt Square Flange Block; 7/8" Bore; 4" Bolt Circle; 2-3/4" Bolt Spacing; 1 Piece Solid; Set Screw Mount; Cast Iron; Ball Bearing; 1-11/32" Length Thru Bore; Relubricatable; M Se
Other Features	Single Row Standard Duty Wide Inner Race Open End Has Flinger Y Bearing
Category	Flange Block
UNSPSC	31171501
Harmonized Tariff Code	8483.20.40.40
Noun	Bearing
Keyword String	Flanged
Manufacturer URL	http://www.skf.com
Manufacturer Item Number	FY 7/8 TF
Weight / LBS	1.9
Cartridge Pilot Depth	0 Inch 0 Millimeter
Cartridge Pilot Diameter	0 Inch 0 Millimeter
Length Thru Bore	1.344 Inch 34.13 Millimeter
Nominal Bolt Circle Diameter Round	4 Inch 101.6 Millimeter
Bore	0.875 Inch 22.225 Millimeter
Bolt Spacing	2.75 Inch 69.85 Millimeter



NTN BEARING MANUFACTURING DE MEXICO,S...

Housing material	Cast iron
D_a	74.6 mm
D_{b1}	65 mm
D_{b2}	71 mm
A	30 mm
A_1	12 mm
A_3	3.2 mm
A_5	20.5 mm
N	11.5 mm
s_1	19.8 mm
R_G	1/4-28 UNF
R_1	21 mm
D_N	6.5 mm
SW_N	7 mm
G_N	1/4-28 SAE-LT
J_6	83 mm
J_7	19 mm
N_4	4 mm
Basic dynamic load rating C	14 kN
Basic static load rating C_0	7.8 kN
Fatigue load limit P_u	0.335 kN
Limiting speed	7000 r/min
Mass bearing unit	0.74 kg
Thread grub screw G_2	1/4-28 UNF
Hexagonal key size for grub screw N	3.175 mm
Recommended tightening torque for grub screw	4 N · m
Recommended diameter for attachment bolts, mm G	10 mm
Recommended diameter for attachment bolts, inch G	0.375 in