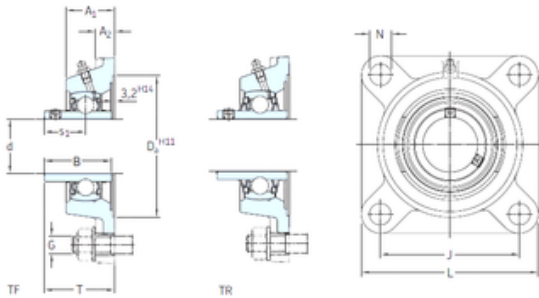


skf FY 1.1/8 FM Ball bearing square flanged units



Bearing No. FY 1.1/8 FM

FY 1.1/8 FM Bearing 2D drawings and 3D CAD models

|                               |                            |
|-------------------------------|----------------------------|
| Bore Diameter                 | 28,575 mm                  |
| d                             | 28,575 mm                  |
| s1                            | 26,7 mm                    |
| A1                            | 32,5 mm                    |
| B1                            | 35,7 mm                    |
| G                             | 10 mm                      |
| J                             | 82,5 mm                    |
| L                             | 108 mm                     |
| T                             | 46,7 mm                    |
| A2                            | 13 mm                      |
| Weight                        | 1,1 Kg                     |
| Basic dynamic load rating (C) | 19,5 kN                    |
| Basic static load rating (C0) | 11,2 kN                    |
| Fatigue load limit (Pu)       | 0,475                      |
| Category                      | Flange Block Bearings      |
| Inventory                     | 0.0                        |
| Manufacturer Name             | SKF                        |
| Minimum Buy Quantity          | N/A                        |
| Weight / Kilogram             | 1.2                        |
| EAN                           | 7316576614385              |
| Product Group                 | M06110                     |
| Number of Mounting Holes      | 4                          |
| Mounting Method               | Eccentric Collar           |
| Housing Style                 | 4 Bolt Square Flange Block |
| Rolling Element               | Ball Bearing               |
| Housing Material              | Cast Iron                  |



# NTN BEARING MANUFACTURING DE MEXICO,S...

|                                    |  |
|------------------------------------|--|
| Expansion / Non-expansion          | Non-expansion  |
| Mounting Bolts                     | 7/16 Inch  |
| Relubricatable                     | Yes  |
| Insert Part Number                 | YET 206-102  |
| Seals                              | M Seal   |
| Housing Configuration              | 1 Piece Solid  |
| Pilot Configuration                | No Pilot   |
| Inch - Metric                      | Inch   |
| Long Description                   | 4 Bolt Square Flange Block; 1-1/8" Bore; 4.7" Bolt Circle; 3-1/4" Bolt Spacing; 1 Piece Solid; Eccentric Collar Mount; Cast Iron; Ball Bearing; 1-13/32" Length Thru Bore; Relubrica |
| Other Features                     | Single Row   Standard Duty   Narrow Inner Race   Open End   Y Bearing  |
| Category                           | Flange Block   |
| UNSPSC                             | 31171501   |
| Harmonized Tariff Code             | 8483.20.40.40  |
| Noun                               | Bearing  |
| Keyword String                     | Flanged  |
| Manufacturer URL                   | <a href="http://www.skf.com">http://www.skf.com</a>  |
| Manufacturer Item Number           | FY 1.1/8 FM  |
| Weight / LBS                       | 2.65   |
| Bore                               | 1.125 Inch   28.575 Millimeter   |
| Length Thru Bore                   | 1.406 Inch   35.7 Millimeter   |
| Cartridge Pilot Depth              | 0 Inch   0 Millimeter  |
| Nominal Bolt Circle Diameter Round | 4.7 Inch   120 Millimeter  |
| Cartridge Pilot Diameter           | 0 Inch   0 Millimeter  |
| Bolt Spacing                       | 3.25 Inch   82.55 Millimeter   |
| Housing material                   | Cast iron  |
|                                    |  |



# NTN BEARING MANUFACTURING DE MEXICO,S...

|   |               |
|---|---------------|
| $D_a$   | 93.7 mm       |
| $D_{b1}$  | 76 mm         |
| $D_{b2}$  | 84 mm         |
| A   | 32.5 mm       |
| $A_1$   | 13 mm         |
| $A_3$   | 3.2 mm        |
| $A_5$   | 22.5 mm       |
| $B_1$   | 35.7 mm       |
| N   | 11.5 mm       |
| $s_1$   | 26.7 mm       |
| $R_G$   | 1/4-28 UNF    |
| $R_1$   | 21 mm         |
| $D_N$   | 6.5 mm        |
| $SW_N$  | 7 mm          |
| $G_N$   | 1/4-28 SAE-LT |
| $J_6$   | 96 mm         |
| $J_7$   | 24.5 mm       |
| $N_4$   | 4 mm          |
| Basic dynamic load rating C                       | 19.5 kN       |
| Basic static load rating $C_0$                    | 11.2 kN       |
| Fatigue load limit $P_u$                          | 0.475 kN      |
| Limiting speed                                    | 6300 r/min    |
| Mass bearing unit                                 | 1.05 kg       |
| Thread grub screw $G_2$                           | 5/16-24 UNF   |
| Hexagonal key size for grub screw N               | 3.969 mm      |
| Recommended tightening torque for grub screw      | 6.5 N · m     |
| Recommended diameter for attachment bolts, mm G   | 10 mm         |
| Recommended diameter for attachment bolts, inch G | 0.375 in      |